

GETTING STARTED

2021-2022



BECOME A BRUIN

Quick Steps

1. APPLY FOR ADMISSION

Fill out the online application, the \$40 fee is waived for Fall 2021 and Spring 2022, and you are on your way to enrolling at SLCC!

slcc.edu/apply

2. SETUP YOUR MYSLCC

my.slcc.edu

3. COMPLETE THE PLACEMENT PROCESS

Completing the SLCC Placement process will help you register for the appropriate courses for your major.

slcc.edu/testing

4. SIGN UP FOR ORIENTATION

During Orientation you'll learn how to register for classes, receive helpful information regarding major and career exploration and acquire useful tips on what it takes to be a successful college student.

slcc.edu/oss

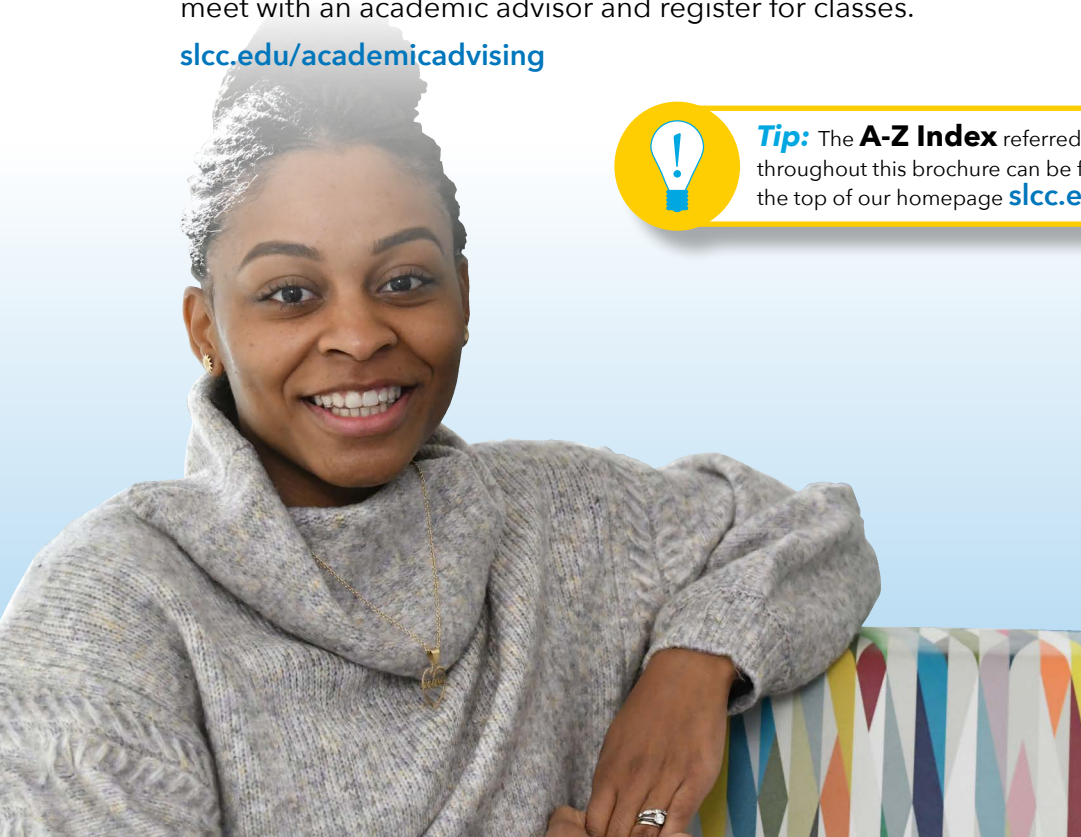
5. REGISTER FOR CLASSES

Once you have completed the steps above, you are ready to meet with an academic advisor and register for classes.

slcc.edu/academicadvising



Tip: The **A-Z Index** referred to throughout this brochure can be found at the top of our homepage slcc.edu



Step 1.

APPLY FOR ADMISSION

slcc.edu/apply

New Students

Welcome to SLCC! Your first step is to complete the online Admissions Application. Check out the Admissions website for more details slcc.edu/admissions.

The \$40 application fee has been waived for Fall 2021, and Spring 2022 semesters.

Once your application has been processed, your official admission letter will be sent to you by mail. **Make sure to submit the application by the admissions deadline!**

A-Z Index: [Admissions](#)

Returning Students

If you:

- Have been absent from the college for one to three years

OR

- Have been admitted but did not begin classes during your semester of admission

You are required to:

- Complete the **Admission Application Update** found on your MySLCC account under the Semester Checklist tab

There is no charge to submit the Admission Application Update.

Not sure how to submit the Admissions Application Update? Check out our tutorial at slcc.edu/admissions

Concurrent & Early Enrollment Students

For more information on how to apply please visit:

slcc.edu/concurrentenrollment

slcc.edu/earlyenrollment

Interested in the School of Applied Technology & Technical Specialties? (SATTS)

Indicate on the Admission Application that you are interested in taking short-term, flexible courses for career training or earning a certificate. When you have submitted your application, meet with an SAT advisor to determine your desired program, availability and eligibility. The advisor will lead you through the next steps.

Note: If you are switching from a credit program to the School of Applied Technology, or vice versa, you must fill out the Admissions Application Update.

A-Z Index: [School of Applied Technology](#)

International Students

International Students have a different admissions process; your application fee is good for one year, there are additional documents required and your deadlines are usually a little bit earlier than traditional students. Details about deadlines can be found at International Student Services.

A-Z Index: [International Students](#)



Step 2.

COMPLETE THE PLACEMENT PROCESS

slcc.edu/testing

Many classes at SLCC, especially English and Math, require placement. Before you can register for those classes, you will need to complete the SLCC Placement Process or submit your ACT/SAT scores. The results will be used to advise you regarding appropriate class placement.

English scores do not expire but ACT math scores expire after 18 months and SAT math scores expire after 12 months. If your scores have expired, don't worry, you can take the SLCC Placement Process.

The SLCC Placement Process is free and can be completed on any device. Be sure to have your SLCC Student Number to test. (Hint: you may retrieve your S Number at my.slcc.edu).

Testing Services Locations

Jordan Campus

3491 W Wights Fort Road, West Jordan
Jordan Health Sciences (JHS) Room 054
801-957-6220

Miller Campus

9750 South 300 West
Sandy, UT 84070
Miller Free Enterprise Center (MFEC)
Room 238
801-957-5221

South City Campus

1575 S State Street, Salt Lake City
Room 2-187
801-957-3161

Taylorville Redwood Campus

4600 S Redwood Road, Salt Lake City
Construction Trades (CT) Room 033
801-957-4500

West Valley Center

3460 S 5600 W, West Valley City
Suite 120
801-957-2133

Westpointe Center

2150 W Dauntless Av, Salt Lake City
Room 213
801-957-2168

Testing Center Hours

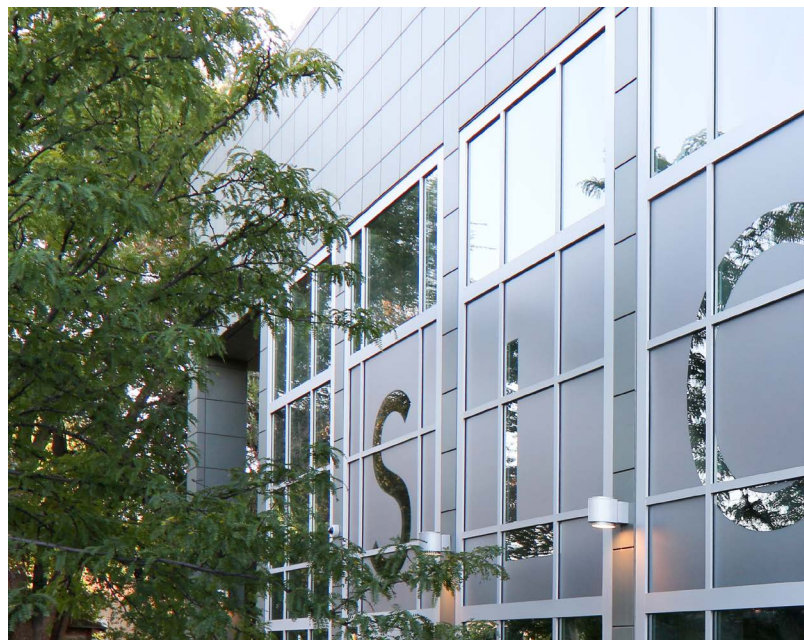
Visit slcc.edu/testing to check Testing Services open locations and hours.

Are you a Transfer Student?

If you have college credits from another college or university, you may be exempt from all or part of the placement assessment. Please submit your official college transcripts and complete the Request for Transcript Evaluation form. (slcc.edu/transcriptevaluation) You want to be sure that your previous credits become a part of your academic history as you continue your education at SLCC.

Don't put it off. This process can take 2-4 weeks or longer during peak registration periods.

A-Z Index: [Transcript Evaluation](#)



Step 3.

COMPLETE NEW STUDENT ORIENTATION

All first-time, first-year students must complete an orientation, including former concurrent enrollment students.

If you are a Returning or Transfer student, you do not have to complete an orientation, but you can register earlier for classes if you do.

To register for Orientation, first set up your MySLCC account.

1. Visit **MySLCC** my.slcc.edu
2. Click on **Retrieve Your Student Number And Username**
3. Go back to the MySLCC login page
4. Click on **Reset Password** to create your **MySLCC** account

Once you have logged into MySLCC:

5. Select the **Semester Checklist** tab
6. Register for Orientation

A-Z Index: [Orientation, New Student](#)



Step 4.

REGISTER FOR CLASSES.

Not sure what classes to register for?

Your Academic Advisor can help you out!

To set up an appointment with your Academic Advisor:

1. Log in at your **MySLCC** page
2. Select the **Advising** tab
3. Select **Login to MySuccess** option
4. Check your My Success Network on your homepage to see who your Primary Advisors are for each service on campus OR if your desired staff member/campus service isn't listed in your Success Network, you can type them into the search bar
5. Click on the staff member you would like to meet to view their Schedule Appointment Button
6. Select your date, time, and location (in-office, phone, or WebEx video chat)

A-Z Index: [Academic Advising](#)

Check out the Academic Calendar for registration dates, term start and end dates, tuition deadlines, class add/drop deadlines and more.

A-Z Index: [Academic Calendar](#)

Schedules listing all classes available for each semester, including times, campus and room numbers, are posted online a few weeks prior to registration. Use the searchable schedule for real-time class seat availability.

A-Z Index: [Class Schedule](#)

Check out the detailed tutorial on how to register for classes at slcc.edu/registrar/registration.



PAYING FOR COLLEGE

FINANCIAL AID

We want to help you take the worry out of funding your education by guiding you toward many types of financial aid, including: scholarships, grants, SLCC Promise, work study and loans.

You can get started by completing the **Free Application for Federal Student Aid (FAFSA)** online at studentaid.gov

Federal School Code: **005220**

Apply as early as possible! The process can take up to three months to complete.

For specific information about the deadlines and application steps visit slcc.edu/financialaid

A-Z Index: [Financial Aid](#)

GRANTS

Grants are gifts of money that do not have to be repaid under most circumstances. You must show financial need to qualify for grant programs. Most grant funding is limited, so early application is encouraged.

WORK STUDY

The Federal Work-Study Program provides part-time jobs for students with financial need to earn money for college. You must apply for Financial Aid before being eligible for the Work-Study Program.

A-Z Index: [Work Study](#)

LOANS

Federal Title IV loan programs assist students with their educational expenses and are repaid when the student is no longer attending or enrolled in at least six credit hours. SLCC participates in three federal loan programs: **Federal Perkins Loan, Federal Direct Stafford Student Loan** (subsidized and unsubsidized) and **Federal Direct Parent Loan for Undergraduate Students (PLUS)**.

A-Z Index: [Student Loans](#)

SCHOLARSHIPS

SLCC has many great scholarship opportunities for first-year and continuing students. Scholarships don't need to be paid back, they are free money.

Visit slcc.edu/scholarships for the most recent information about scholarships and application deadlines.

HB 144

Students not eligible for residency due to immigration status may qualify for an exemption from non-resident tuition under the HB 144 Waiver. In order to qualify for the HB 144 Waiver, students must have attended a Utah high school for at least three years and have earned a Utah high school diploma or GED.

A-Z Index: [Residency](#)

A-Z Index: [Undocumented Students](#)

SLCC PROMISE

SLCC Promise helps eligible students pay for education by covering the cost of tuition and fees when federal grants fall short. Visit slcc.edu/promise for details.

TUITION PAYMENT PLAN (TPP)

A Tuition Payment Plan lets you spread your tuition and fees over four monthly payments for fall and spring semesters, and over three payments for the summer semester. A TPP does not reduce your financial obligation to the college. The first installment must be included at the time of application. There is a \$30 nonrefundable application fee per semester. Please apply and pay online through your MySLCC account.

A-Z Index: [Tuition Payment Plan](#)

BE READY WHEN CLASSES BEGIN

○ Check Financial Aid Requirements

Important! Make sure to complete any requirements as soon as possible to avoid disbursement delay.

How to check requirements through MySLCC:

1. Log into your **MySLCC**
2. Go to the **Tuition & Financial Aid** tab
3. Check under **Financial Aid Requirements** for any messages
4. If you see any red flags, make sure to follow up

A-Z Index: [Financial Aid](#)

○ Get your OneCard

The OneCard is the official student ID of SLCC and your key to campus life.

You must be currently registered (enrolled in at least one class) and show official photo ID to obtain a OneCard.

Go to slcc.edu/onecard to find how to get your OneCard.



Learn how to update your student records. Go to the Registrar website, select the Forms page and choose **Personal Information Update Form**
slcc.edu/student/forms/index.aspx

○ Purchase Your Parking Permit

All vehicles are required to have a permit at all SLCC locations (unless you are using metered parking or paying for visitor's parking). You can purchase parking permits online through your MySLCC account. Make sure to have your vehicle registration handy when filling out the form.

1. Log in to **MySLCC**.
2. Click on **Campus Life** tab
3. Click on **Purchase Parking Permits/Pay Citations**
4. Click on the MySLCC Button
5. Select **Add New Vehicle** and enter your vehicle information
6. After adding in all your vehicles

(students are allowed up to 2), click on **Buy Permit**

7. Select the type of permit you want, add your vehicles to the permit, and complete checkout

Note: In order to park at the Library Square Center, you must obtain a permit specifically including Library Square. A regular SLCC parking permit will not allow you to park at the Library Square Center.

A-Z Index: [Parking Services](#)

○ Arrange to Pay Tuition

Paying your tuition and fees has never been easier. You have the option of paying online through SLCCPay+ (access via MySLCC), with an electronic check, savings account transfer, accepted credit card or debit card. You may also pay by phone at 801-957-3914, by mail or visit one of our locations at Taylorsville Redwood, South City, Miller, Jordan or Westpointe campuses or our West Valley Center to pay in person.

Avoid late fees by paying at the time of registration or making timely payment arrangements.

A-Z Index: [Cashier Services](#)

○ Buy Books and Supplies

You can look up the books you need for your classes on MySLCC.

Log into your MySLCC and go to the Semester Checklist tab. The Explore your Textbook Options link is in the bottom right corner of the page.

A-Z Index: [Bookstore](#)

○ Open Educational Resources

Open Educational Resources are a less expensive alternative to traditional textbooks. Open SLCC Resources provide online textbooks at a low cost or at no cost at all. Check out the instructions for finding Open SLCC courses at slcc.edu/open.

A-Z Index: [Open Educational Resources \(OER\)](#)

EIGHT PATHWAYS TO SUCCESS

Are you undecided about your program of study?

Career Services can help you explore major and career options.

A-Z Index: Career Services



Tip:

Visit slcc.edu/academics to explore each area of study. There you will also find the **suggested first 5 classes** for each area. These suggested courses offer a great start for students who are not ready to pick a major.

If you are aiming for a specific bachelor's degree program:

Work with an academic advisor to build an educational plan that works best for you. They will guide you to resources that will help you find the appropriate courses to satisfy the requirements of the anticipated transfer institution.

A-Z Index: Academic Advising

(AS) Associate of Science

(AA) Associate of Arts

(APE) Associate of Pre-Engineering

(AAS) Associate of Applied Science

(CC) Certificate of Completion

(CP) Certificate of Proficiency

(CA) Certificate of Achievement



ARTS, COMMUNICATION AND DIGITAL MEDIA

Architecture.....	AS
Communication Studies.....	AS
Fashion Design & Merchandising:	
Fashion Design.....	AAS
Fashion Merchandising.....	AAS
Technical Apparel.....	AAS
Film Production Technician.....	AAS
Game Development.....	CP
Graphic Communications.....	AS, CC
Graphic Technician ●●.....	CP
Interior Design.....	AAS, CP
Journalism & Digital Media.....	AS
Media Music.....	AAS
MIDI.....	CP
Mobile Publishing.....	CC
Motion Graphics.....	CP
Music.....	AS
Music Recording Technology.....	AAS, CP
Technical Theatre.....	CP
Theatre Arts.....	AS
Theatre Performance.....	CP
Video/Radio Production.....	AAS
Visual Art and Design:	
Animation.....	AS
Animation Emphasis.....	AAS
Graphic Design Emphasis.....	AAS
Illustration Emphasis.....	AAS
Multimedia Emphasis.....	AAS
Photography Emphasis.....	AAS
Web Design Emphasis.....	AAS
Web Graphic Design.....	CP
Web Programmer ●●.....	CP
Website Designer ●●.....	CP
Interdisciplinary Studies ●.....	AA, AS

● Selective Admission Programs | ● Competency-Based

● Continuing Education | ● School of Applied Technology Program

(AS) Associate of Science | (AA) Associate of Arts | (APE) Associate of Pre-Engineering

(AAS) Associate of Applied Science | (CC) Certificate of Completion

(CP) Certificate of Proficiency | (CA) Certificate of Achievement



BUSINESS

Accounting	.AAS, CC
Bookkeeping Clerk	●● CA
Business	AA, AS
Business Administration	AAS
Business Management	.AAS, CC
Commercial Baking	●● CC
Commercial Foods Certificate	●● CC
Culinary Arts	AAS
Event & Meeting Planner	● CA
Finance & Credit	.AAS, CC
First Line Supervisor	●● CA
Hospitality Management	AAS
Marketing Management	.AAS, CC
Retail Management	CC
Travel Planner	● CA
Interdisciplinary Studies	● AA, AS



HEALTH SCIENCES

Certified Nursing Assistant	●● CA
Clinical Laboratory Assistant	●● CA
Clinical Medical Assistant	CC
Coding Core for Healthcare Professionals	●● CA
Dental Hygiene	● AAS
Emergency Medical Technician Training	CA
Fitness Technician	AAS
Health Science	● AS
Medical Coding & Billing	●● CP
Medical Office Administration	●● CP
Medical Scribe	●● CA
Mortuary Science	● AAS
Nursing	● AAS
Occupational Therapy Assistant	● AAS
Pharmacy Technician	●● CC
Physical Therapist Assistant	● AAS
Pre-Medical & Health Sciences	.AS
Radiologic Technology	● AAS
Respiratory Therapy	● AAS
Surgical Technology	● CC
Interdisciplinary Studies	● AA, AS



COMPUTER SCIENCE AND INFORMATION TECHNOLOGY

Computer Programming	●● CA
Computer Sciences & Information Systems	.AS, AAS
Desktop Support Technician	●● CA
Geographic Information Systems	CP
Geospatial Technology	.AAS
Network Administrator-MCITP:SA	●● CP
Network Engineer	●● CP
Network Support Technician	●● CA
Windows Network Administration	●● CA
Windows Server Administration	●● CA
Interdisciplinary Studies	● AA, AS



HUMANITIES

American Sign Language	.AA
ASL/English Interpreting	● AAS
English Studies	.AS
English as a Second Language	●
Genealogy	● CA
History	.AA
Humanities	.AA
Writing	CC
Writing Studies	.AS
Interdisciplinary Studies	● AA, AS



MANUFACTURING, CONSTRUCTION AND APPLIED TECHNOLOGIES

Advanced Manufacturing	AAS
Advanced PLC & Robotics Technician	CA
Aerospace/Aviation Maintenance Technology	AAS
Air Conditioning/Heating/Refrigeration	CC
Aircraft Electronics	CP
Automation & Instrumentation Technician	CC
Automotive Collision Repair	CC
Automotive Collision Repair & Refinishing	AAS
Automotive Maintenance & Light Repair	CC
Automotive Refinishing	CC
Automotive Technician	AAS
Brick Mason Technology Apprenticeship	AAS
Brick Mason	CA
Cabinet Making & Furniture Construction	CC
Certified Electronics Technician	CP
Collision, Maintenance & Light Repair	AAS
Construction Laborer	CC
Construction Management	AS
Construction Management & Sustainable Building	AAS
Diesel Service Technician & Driver	CC
Diesel Service Technician	CP
Diesel Systems Technology	AAS, CC
Electrical Independent Technology Apprenticeship	AAS
Electromechanical Assembly Technician	CA

Electronics Assembly Technician	CA
Electronics Communications Technician	CA
Electronics Engineering Technician	CA
Energy Management	AAS
Heating, Cooling & Refrigeration Technology Apprenticeship	AAS
Manual Machinist	CA
Motorcycle & Outdoor Power Equipment Technology	CP, CC
Non-Destructive Testing: Ultrasonics	CC
Eddy Current	CC
Radiography Technology	CC AAS
Personalized Apprentice Training Plumber/Pipefitter JATC Technology Apprenticeship	AAS
Plumbing Independent Technology Apprenticeship	AAS
Professional Truck Driving CDL	CA
Refrigeration JATC Technology Apprenticeship	AAS
Stagehand JATC Technology Apprenticeship	AAS
Surveying	AAS, CP
Sustainable Building Construction	CC
Welding	CC
Welding Fabrication & Inspection	AAS
Welding Technology	CC
Interdisciplinary Studies	AA, AS



SCIENCE, ENGINEERING AND MATHEMATICS

Atmospheric Science	AS
Biology	AS
Biotechnology	AS, CP
Chemical Engineering	APE
Chemistry	AS
Civil/Environmental Engineering	APE
Computer Engineering	APE
Electrical Engineering	APE
Electronics Engineering Technology	AAS, CC
Engineering Design/Drafting Technology	AS
Engineering Drafting & Manufacturing Technology	AAS, CC
Environmental Science & Sustainability	CP
Exercise Science/Kinesiology	AS
General Engineering (Traditional or Full)	APE
Geographic Information Science	AS

Geological Engineering	APE
Geology	AS
Machining CNC/CAM Technology	CC
Manufacturing Engineering	APE
Manufacturing Engineering Technology	AS
Materials Science Engineering	APE
Mathematics	AS
Mechanical Engineering	APE
Mechanical Engineering Technology	AS
Metallurgical Engineering	APE
Microscopy	CP
Mining Engineering	APE
Nanotechnology	CP
Physics	AS
Small Unmanned Aerial Systems	CP
Interdisciplinary Studies	AA, AS

● Selective Admission Programs | ● Competency-Based | ● Continuing Education | ● School of Applied Technology Program

(AS) Associate of Science | (AA) Associate of Arts | (APE) Associate of Pre-Engineering
(AAS) Associate of Applied Science | (CC) Certificate of Completion
(CP) Certificate of Proficiency | (CA) Certificate of Achievement



SOCIAL & BEHAVIORAL SCIENCES, EDUCATION AND HUMAN SERVICES

Anthropology	AA, AS
Criminal Justice	AS, AAS
Cultural Resource Management	CP
Economics	AS
Education	AS
Family and Human Studies	AS, AAS, CC
International & Global Studies	AA
Paralegal Studies	AAS
Peace Officer Basic Training	CA
Political Science	AS
Psychology	AS
Social Work	AA, AS
Sociology	AS
Special Function/Reserve Officer Training	CA
Transition to Teaching/ARL ●	CA
Interdisciplinary Studies ●	AA, AS

INTERDISCIPLINARY STUDIES (IDS)

If you want to create your own major or combine disciplines in a rigorous, self-designed AA/AS degree and are certain about transferring to a four-year school, IDS may be the option for you.

slcc.edu/interdisciplinary-studies/index.aspx

HONORS PROGRAM

If you want to engage in rigorous classes and prepare for an Honors program at a four-year school, apply for competitive admissions to the SLCC Honors program at the beginning of your major.

slcc.edu/honors

- Selective Admission Programs | ● Competency-Based
- Continuing Education | ● School of Applied Technology Program
- (AS) Associate of Science | (AA) Associate of Arts
- (APE) Associate of Pre-Engineering
- (AAS) Associate of Applied Science | (CC) Certificate of Completion
- (CP) Certificate of Proficiency | (CA) Certificate of Achievement

Program options are subject to change.
 Visit SLCC’s online catalog for
 up-to-date information.
slcc.edu/catalog



SLCC LOCATIONS

Find Your Way Around

Check out our different locations! Visit slcc.edu and click on **Maps** to find directions, campus maps and building diagrams. **Campus Tours** are available upon request at slcc.edu/admissions



① Westpointe Workforce Training & Education Center

2150 W Dauntless Avenue
Salt Lake City, UT 84116
801-957-2150

② International Aviation Education Center

551 N 2200 West
Salt Lake City, UT 84116
801-957-2050

③ Library Square Center

231 E 400 South
Salt Lake City, UT 84111
801-957-2000

④ South City Campus

1575 S State Street
Salt Lake City, UT 84115
801-957-3350

⑤ West Valley Center

3460 S 5600 West
West Valley City, UT 84128
801-957-2117

⑥ Taylorsville Redwood Campus

4600 S Redwood Road
Salt Lake City, UT 84123
801-957-4073

⑦ Jordan Campus

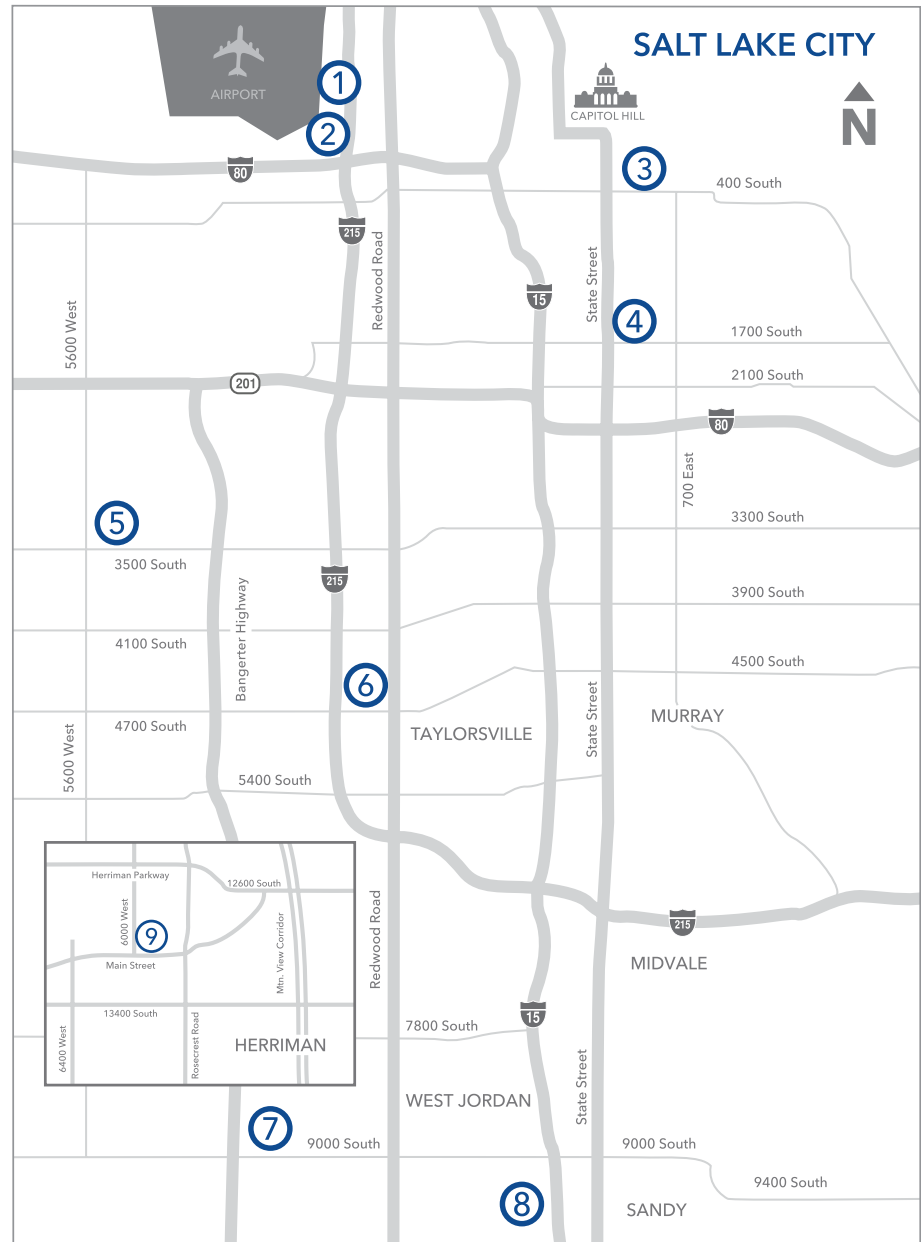
3491 W 9000 South
West Jordan, UT 84088
801-957-2600

⑧ Larry H. Miller Campus

9750 S 300 West
Sandy, UT 84070
801-957-5417

⑨ Herriman Annex

13011 S Pioneer Street
Herriman, UT 84096
801-957-5225



UTA TRANSIT PASS

SLCC provides free transit passes to all active students, faculty and staff. The pass is valid on UTA buses, TRAX and FrontRunner.

slcc.edu/onecard/utaedpass.aspx

SLCC ONLINE

SLCC Online provides an innovating and flexible onling learning experience.

slcc.edu/online
801-957-4406

HELPFUL RESOURCES



Career Services

Come see us for student employment opportunities, internships, how to improve your resume and more.

slcc.edu/careerservices

801-957-4014

Child Care & Family Services

Assists SLCC student parents by providing quality child care services and family resources. Financial assistance is available for both on-campus and off-campus licensed care. Eligibility required.

slcc.edu/childcare

801-957-3070

Dream Center

A dedicated space for undocumented students (with and without DACA) to feel safe, welcomed and supported throughout their academic journeys. Receive assistance with residency applications, scholarship materials and explore related resources based on specific needs. Located in the West Valley Center, room 130.

slcc.edu/dreamcenter

dreamcenter@slcc.edu

801-957-2129

Disability Resource Center

SLCC values inclusive learning environments and strives to make all aspects of the college accessible to students who need accommodations to improve access to learning materials or the learning environment. Visit us at the Taylorsville, South City, Jordan and Miller Campuses.

slcc.edu/drc

801-957-4659

Gender and Sexuality Student Resource Center

Gender and Sexuality Student Resource Center (GSSRC) exists to support womxn and LGBTQ+ students from college access to graduation. If you need help navigating SLCC, making connections and accessing resources, visit us at South City Campus (1-140). You belong here!

Additional resources the GSSRC provide:

- Menstrual hygiene and safer sex products and resources
- A gender- and sexuality-themed library
- Maps of on-campus all-gender restrooms and lactation rooms

slcc.edu/gssrc

801-957-3143

Office of Diversity & Multicultural Affairs

The Office of Diversity & Multicultural Affairs (ODMA) celebrates diversity and promotes academic excellence. ODMA actively supports Students of Color and students with refugee experiences through success coaching, cultural programming, advising multicultural student groups, and more. Come visit us at the Taylorsville Campus STC 236!

slcc.edu/diversity

801-957-4954

HELPFUL RESOURCES

Orientation and Student Success (New Student Orientation)

We teach students about college resources, and expectations associated with being an SLCC student. Stop by and connect with one of our programs!

slcc.edu/oss
801-957-4299

Office of the Registrar and Academic Records

Maintains all student records, degree conferral, transfer evaluation, outgoing transcripts, verifications and more.

slcc.edu/registrar
801-957-4298

Residency

Students are classified either as resident or non-resident at the time the admission application is received. If you have questions regarding your residency status, contact the Admissions Office.

slcc.edu/admissions/residency.aspx
801-957-4485
residency@slcc.edu

Thayne Center for Student Life, Leadership & Community Engagement

We are dedicated to empowering students to realize they have the knowledge and skills to affect positive change in their community.

slcc.edu/thaynecenter
801-957-4555



Veterans Services

Provides assistance and support to all SLCC service members, veterans and dependents.

slcc.edu/veterans
801-957-4289



We help you pay for college. It's that simple.

At Salt Lake Community College, we believe higher education should be available to anyone who desires it. SLCC Promise helps eligible students pay for their education by covering the cost of tuition and fees when federal grants fall short. SLCC Promise is intended to remove economic barriers and to provide a pathway for SLCC students to complete their degrees.

SLCC 
PROMI\$E



Salt Lake
Community
College 

slcc.edu/promise