

welcome!



Office of Admissions

SALT LAKE COMMUNITY COLLEGE

# Meet the Team!



**Daniel Rodriguez**



**Lisa Molina**



**Miguel Rodriguez**



**Riley Bassett**



Office of Admissions

SALT LAKE COMMUNITY COLLEGE

# Admissions Presentations

- **CE Info Sessions**

- What is CE?
- How to Get Started...
- CE vs AP
- Certificates & Associates



- **SLCC 101 Presentations**

- Intro to SLCC
- Student Resources
- Departments
- Areas of Study & Majors



- **Virtual Campus Tours**

- Overview of 3 campuses
- Student Life
- Areas of Study
- Tailored Tours Available



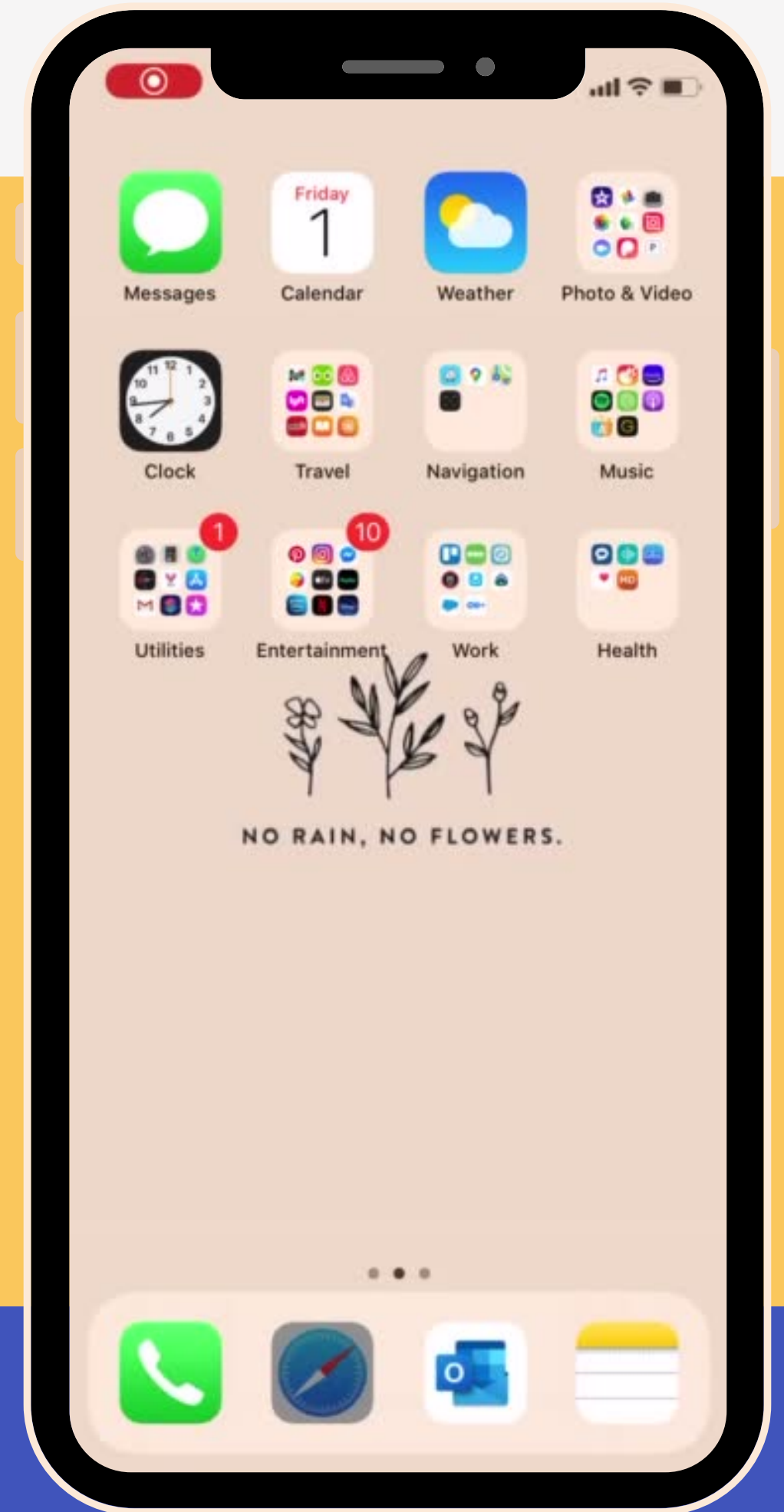
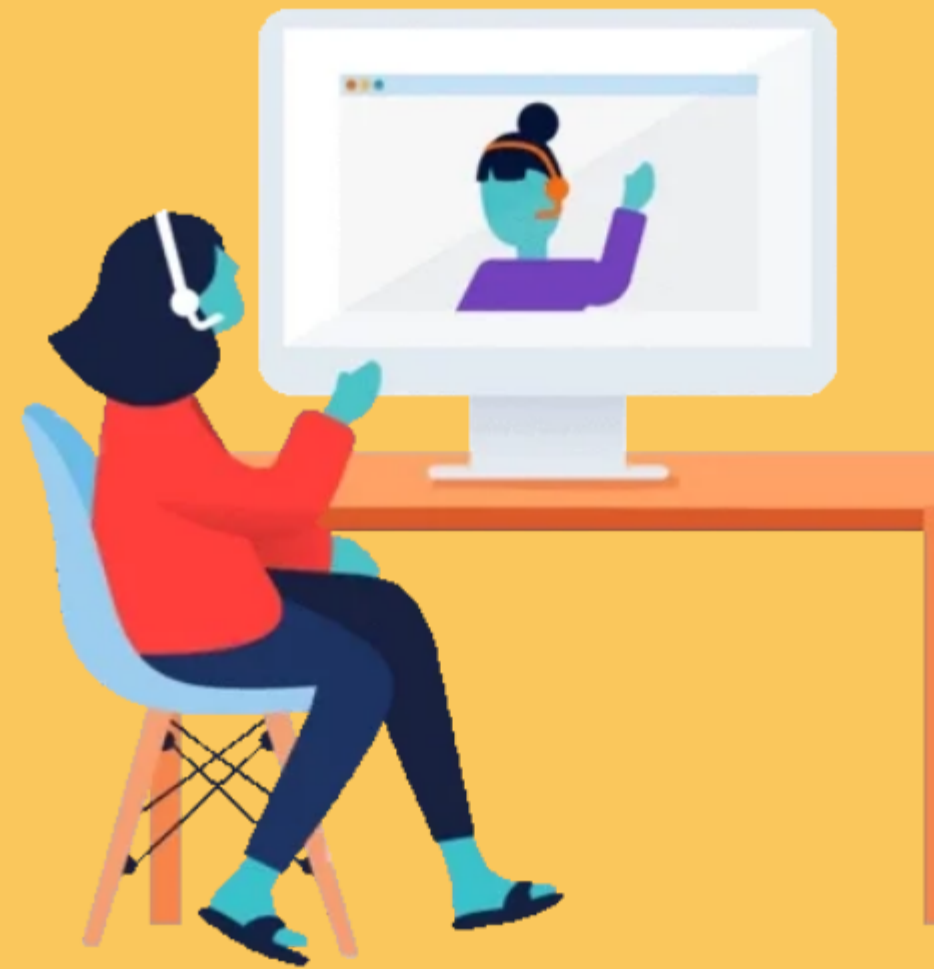
- **Scholarship Presentations**

- Application Process
- Essay Questions
- FAFSA overview
- Tuition



# CE Advising

- **Academic Planning**
- **On Campus vs HS**
- **MYCE**
- **CE Tuition Waiver (March 1st Deadline)**
- **College Access/Resources**
  - **Scholarship**
  - **Career Services**
  - **Tutoring**
  - **Application Update**



# Becoming a Bruin!

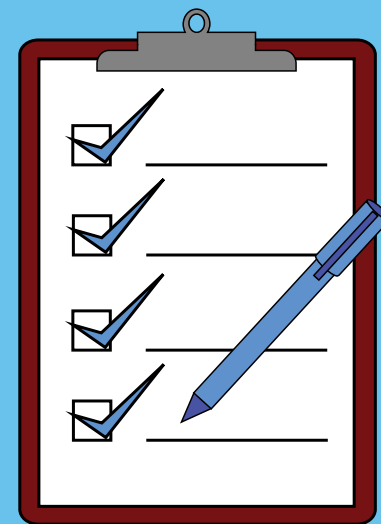
# 1

**Admissions  
Application**



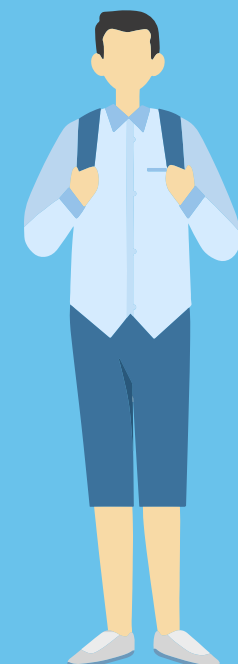
# 2

**College  
Placement  
Testing**



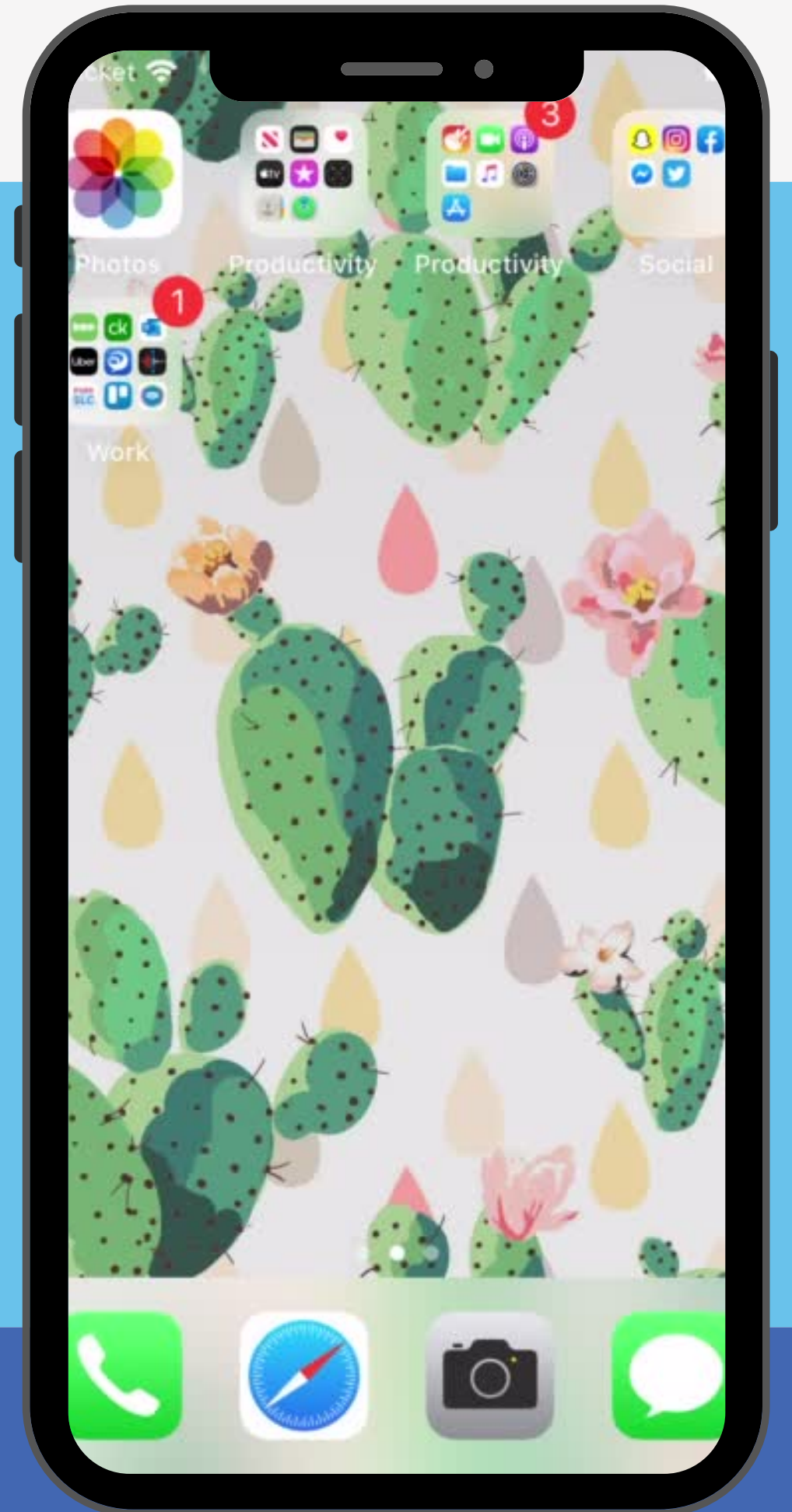
# 3

**New Student  
Orientation**



# Opportunities to Connect

- **Sign up for our monthly newsletter from your advisor.**  
**<https://tinyurl.com/slccce-email>**
- **Connect to our social media for updates, events, and deadlines.**



THANK  
YOU