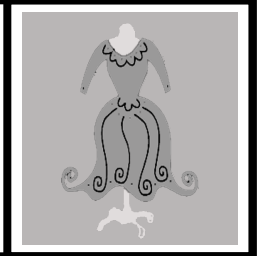


FI

Focus



October 2006

Your Connection to the Salt Lake Community College Fashion Institute

*The Fashion
Institute Program:*

❖ Provides an overall understanding of the various aspects of the fashion industry -

❖ Examines opportunities for careers in fashion and -

❖ Provides instruction in beginning through advanced fashion design and construction.

Ever Thought of Signing Up for a Fashion Institute Internship?

You are investing a lot in your education. Now it's time to make your study pay off. The SLCC Fashion Institute is dedicated to providing students with a variety of local internships. Internships can provide a valuable way to learn about your future career.

There is no better teacher than experience. Learning alongside professionals provides valuable experience, employer references, and can even lead to a job following graduation. Ideally, internships are culminating experiences for fashion Institute students in their last semester using skills obtained through the program.

If you are interested in receiving the latest internship offerings, or if you have a particular type of internship you're interested in please e-mail **Maria Skelton at mskelto2@mymail.slcc.edu**. Put yourself ahead of the pack by applying.

CHECK OUT ONE OF THE LATEST FASHION INSTITUTE INTERNSHIPS BELOW:

Intern Wanted

Company: Black Chandelier

Company description: Jared Gold design house operating two retail outlets.

Job description: We have an internship available for a fashion design person with interest in learning the fashion business. They will be called on to assist the designer with various tasks, learn to run an embroidery machine, do foiling on clothes and various other tasks.

We do two collections a year. We do everything in-house from sketching, draping, flat patterning, cutting, and sample production to small production runs. We show twice a year in NY fashion week and in LA.

Our collections vary annually according to the creative mind of our designer Jared Gold.

Job Qualifications:

The ideal candidate will have sewing skills and a keen interest in fashion with attention to detail. Being a team player will to step up when needed is a must. The position can involve any and all aspects of working with the designer in a workroom to create samples.

The internship is unpaid, the hours are flexible, and it a terrific opportunity to get real hands on experience doing everything involved in putting together a small collection. Chosen candidates will be required to be responsible, on time and reliable. Your school may offer credit

Contact Information:

Maria Skelton
Instructor / Fashion Institute
Salt Lake Community College

Phone: 435-714-0777 / email mskelto2@mymail.slcc.edu

Salary:
Unpaid/ 3 school credit

Hours:
90 total / one semester

Reminder to Students and Faculty
who purchased

UTAH OPERA

Tickets to:

La Traviata

Thursday October 12, 7:00 PM

At the Capital Theater

Sarah will be in the Foyer to distribute the pre-purchased tickets. Please arrive 20 to 15 minutes early. For those who are late, the tickets will be at the box office under SLCC Fashion Institute.

IMPORTANT DATES

Fall Semester 2006

- Last Day of Classes**
(7 1/2 week Session)
Monday, October 16
- Classes Begin**
(Second 7 1/2 week Session)
Tuesday, October 17
- Spring Registration Begins**
Friday, December 1
- Last Day of Classes**
(15 week and Second 7 1/2 week Sessions)
Thursday, December 7
- Final Exams**
December 11-14

Fashion Institute
Contact Info



Instructors:

- Janet Anderson (Instructor)
westjan54@hotmail.com
- Judy Chapman (Instructor)
judychapman2000@yahoo.com
- Janet Gleave (Instructor)
jgleave@comcast.net
- Signe Jacobson (Instructor)
signejacobsen@iglide.net
- Janet Kjar (Instructor)
jeksew4@hotmail.com
- Louise Pascoe (Instructor)
breezydaisies@aol.com
- Sandra Ence Paul (Instructor)
s.ence@comcast.net
- Jill Serfustini (Instructor)
jill142000@aol.com
- Maria Skelton (Instructor)
mskelto2@mymail.slcc.edu
- Sarah Wager (Instructor)
swager1@mymail.slcc.edu

Program Coordinator & Advisor:

- Mojdeh Sakaki (Program Consultant)
mojdeh.sakaki@slcc.edu

Quotable:

"Fashion is Architecture: it is a matter of proportions."
-Coco Chanel

Visit the SLCC Fashion Institute Web site for the Latest Info:

Get ready to surf the web in style! Now current and prospective Fashion Institute students have access to a brand new web site. Receive the most up-to-date information about:

- ◆ The best fashion events in the valley
- ◆ Internship opportunities
- ◆ Sneak previews of future class offerings
- ◆ Photo galleries of students and their work
- ◆ Class schedules and course descriptions
- ◆ And of course, the latest edition of the Focus Newsletter!

The goal of the new web-site is to bridge the communication gap by making all of the latest program and contact information available when you want it! In the coming months, the site will grow to include other exciting features that just might showcase YOU as the rising fashion star you are! Log on today at:

<http://active.slcc.edu/fashion/index.asp>

Fashion Show & Battle of the Bands Gala

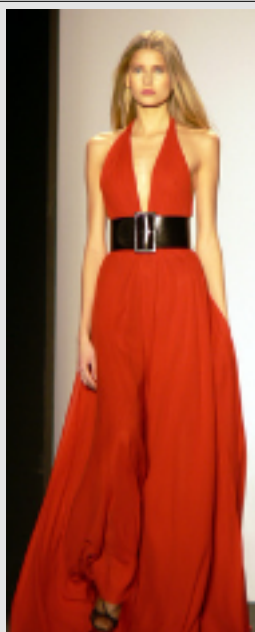
The business marketing organization, Delta Epsilon Chi, is holding a gala on Monday, October 16th at 7 pm in the Union Ballroom. This will include a battle of the bands to be judged by X96 DJs, a fashion show with various boutiques and costume stores, and charity drives for the Utah Food Bank and Breast Cancer Awareness. There will be a segment which will be a "Project Runway" type fashion show where student's designs will be featured. Entrants include Heather Mathiason, Mary Theadore, Jordan Halverson, and a special feature by Sarah Wager.

The cost for the event is \$3, but if you bring some canned goods for the Utah Food Bank, admission is only \$1.

What's In?



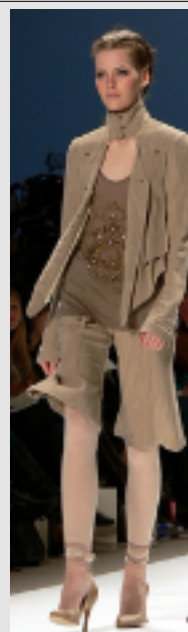
**Menswear
Prints**



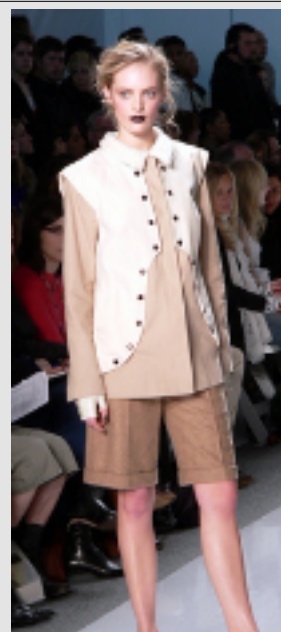
**The Wide
Belt**



**Shorts and
Knickers**



**Leggings
and Tights**



Vests

*Coming Soon to a
theater near you.....*

**Fashion Movie night
Friday November 10th
Rm 223 Miller Campus
Movie: CoCo Chanel
7:00-9:30 PM**

DID YOU KNOW THAT WE HAVE A REFERENCE LIBRARY AVAILABLE FOR STUDENTS IN THE FASHION INSTITUTE?

--Room 117A

WHAT'S AVAILABLE FOR YOU TO CHECK OUT?

--Fashion Related Books

--WWD (Women's Wear Daily)

WHAT ARE THE LIBRARY HOURS?

--M, T, TH (6:45 am - 8:00 pm)

--W (6:45 am - 5:00 pm)

--F (6:45 - 11:45 am & 4 - 8:00 pm)

What classes will you be taking for Spring 2007?

For academic advisement please call the Fashion Institute's Program Coordinator **Mojdeh Sakaki (office) 957-3929, or (e-mail) mojdeh.sakaki@slcc.edu** She can also help you with questions you may have regarding your class schedule as well as give you information on how to make the most of your experience at the SLCC Fashion Institute, including opportunities you may not know about. All questions are good ones, and the answers may help you in your academic pursuits. So don't delay, plan for *your* Fall semester.

Certificate Course Requirements

| Course | Title | Cdt | Sem | Prerequisites | ✓ | |
|-------------------------|--|-----|---------|-----------------------------------|---|--|
| Required Classes | | | | | | |
| FASH 1010 | Introduction to Fashion | 2 | F,Sp,Su | None | | |
| FASH 1100 | Methods of Pattern Design | 3 | F | None | | |
| FASH 1210 | Fashion Illustration I | 2 | F,Su | None | | |
| FASH 1350 | History of Fashion | 2 | F | None | | |
| FASH 1500 | Beginning Sewing (student may test out) | 2 | F,Sp | None | | |
| FASH 1505 | Intermediate Sewing | 3 | F,Sp | FASH 1500 | | |
| FASH 1510 | Advanced Sewing | 3 | F,Sp | FASH 1510 | | |
| FASH 2010 | Textiles | 2 | F | None | | |
| FASH 2100 | Advanced Methods of Pattern Design | 3 | F,Sp | FASH 1100 | | |
| FASH 2400 | Advanced Design | 3 | Sp | FASH 1100, 1200, 1350, 1505, 2100 | | |
| FASH 2450 | Portfolio & Presentation | 2 | SP | FASH 1210 | | |
| MGT 1100 | Fashion Entrepreneurship | 3 | F | FASH 1100, 1200, 1350, 1505, 2100 | | |
| Elective Classes | | | | | | |
| FASH 1150 | Your Personal Pattern | 2 | F,Sp | None | | |
| FASH 1220 | Fashion Illustration II | 2 | Sp | FASH 1200 | | |
| FASH 1300 | Visual Merchandising | 2 | Sp | None | | |
| FASH 1550 | Vocational Alterations and Costuming | 2 | F | none | | |
| FASH 1551 | Adv. Vocational Alterations & Costuming | 2 | Sp | FASH 1550 | | |
| FASH 1600 | Serger Class | 3 | F | FASH 1500 | | |
| FASH 1850 | Fashion Show Production | 4 | Sp | None | | |
| FASH 2200 | Psychology of Clothing | 2 | F | None | | |
| FASH 2240 | Fashion Buying and Management | 2 | F | None | | |
| FASH 2260 | Fashion Forecasting | 2 | SP | None | | |
| FASH 2000 | Internship | 3 | F,Sp,Su | APPROVAL | | |
| FASH 1900 | Special Projects: | | | | | |
| FASH 1900 | -Embellishments | 2 | F | FASH 1500 | | |
| FASH 1900 | -Corset Making | 2 | F, SP | FASH 1500, 1505 | | |
| FASH 1900 | -Silk Painting | 2 | F,Su | None | | |
| FASH 1900 | -Modeling | 2 | F,Su | None | | |
| FASH 1900 | -Tapestry | 2 | F,Su | None | | |
| FASH 1900 | -Bridal Dressmaking | 3 | Su | FASH 1500, 1505 | | |
| FASH 1900 | -Bridal Dressmaking (2) | 2 | SP | FASH 1500, 1505, 1510 | | |
| FASH 1900 | -Fashion Production (Dark Arts) | 2 | SP | FASH 1500, 1505 | | |
| FASH 1900 | -Tailoring | | SU | FASH 1500, 1505 | | |
| | <i>*Minimum 30 hours for certificate</i> | | | | | |

Please feel free to submit any article or information you'd like to share with the Fashion Institute. The submission deadline for the upcoming November/December Newsletter is **October 15th.*