





Determine which of the four levels of measurement (nominal, ordinal, interval, ratio) is most appropriate.

7) Survey responses of "good, better, best".

A) Nominal

B) Ratio

C) Ordinal

D) Interval

Use the margin of error, confidence level, and standard deviation  $\sigma$  to find the minimum sample size required to estimate an unknown population mean  $\mu$ .

8) Margin of error: \$134, confidence level: 95%,  $\sigma = \$532$

A) 105

B) 53

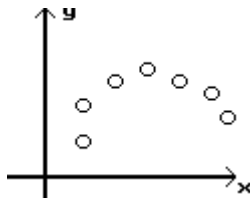
C) 61

D) 8

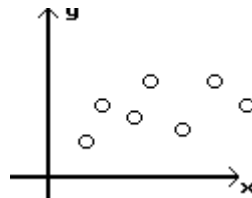
Determine which plot shows the strongest linear correlation.

9)

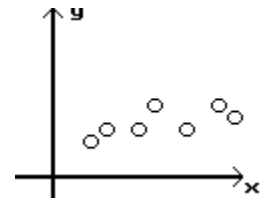
A)



B)



C)



Solve the problem. Round results to the nearest hundredth.

10) The mean of a set of data is 180.89 and its standard deviation is 76.79. Find the z score for a value of 359.18.

A) 2.09

B) 2.55

C) 2.32

D) 2.62

## Answer Key

Testname: S06STATSFINALMC

- 1) C
- 2) D
- 3) B
- 4) A
- 5) C
- 6) B
- 7) C
- 8) C
- 9) C
- 10) C