

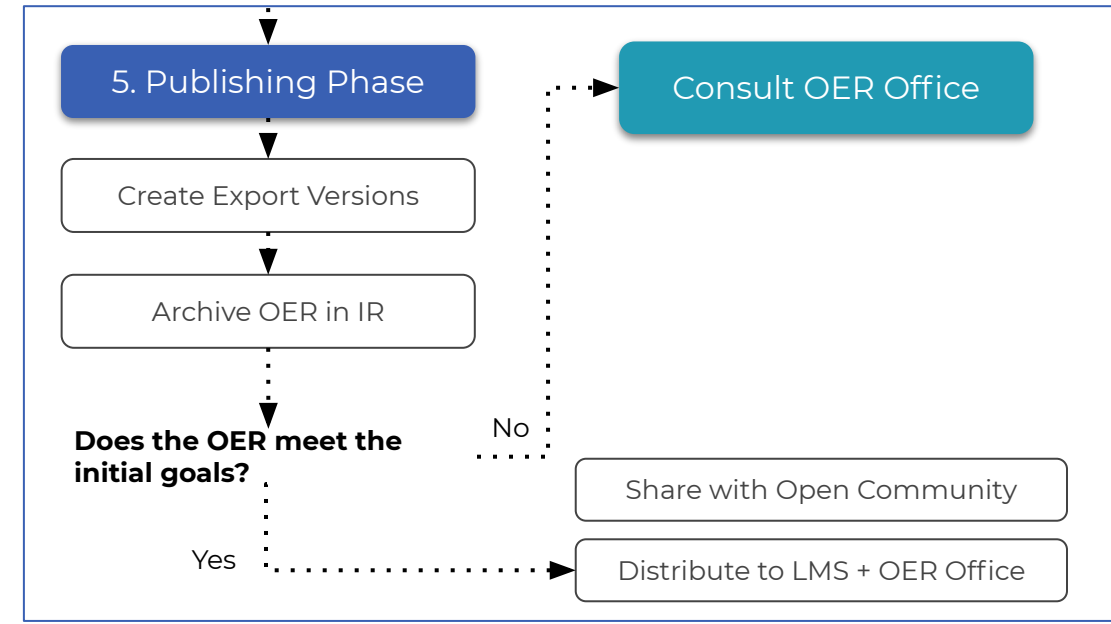
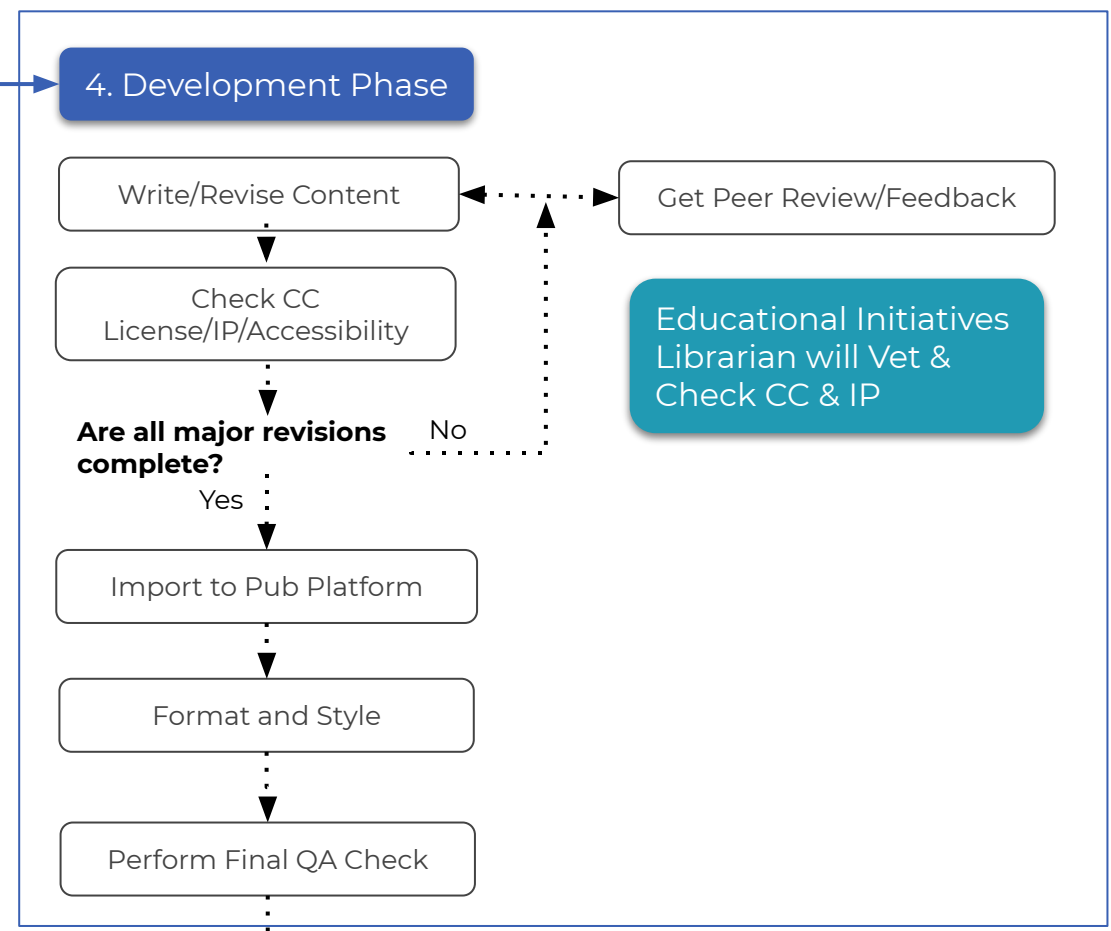
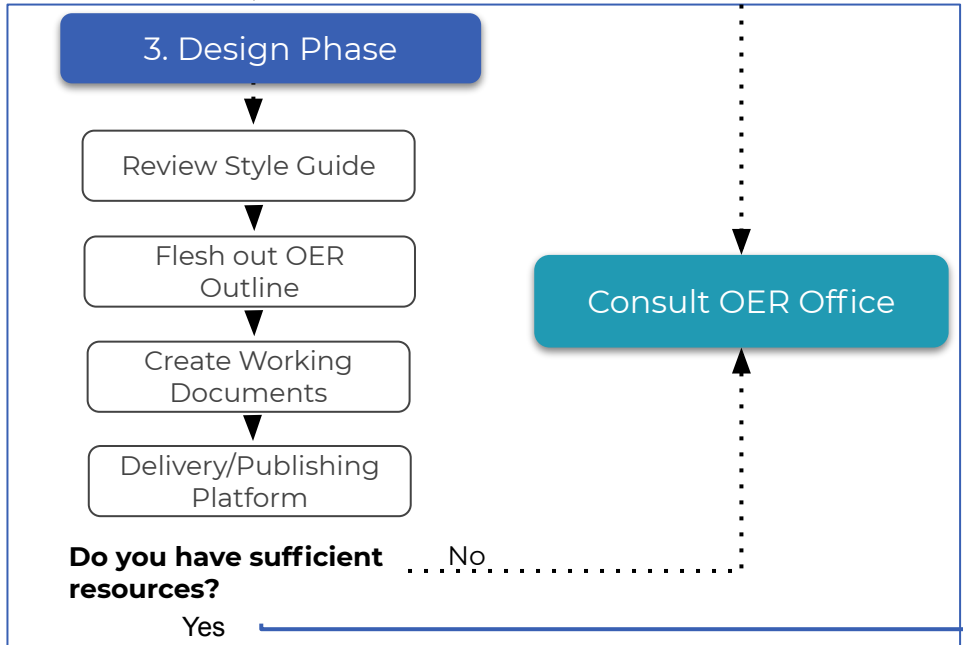
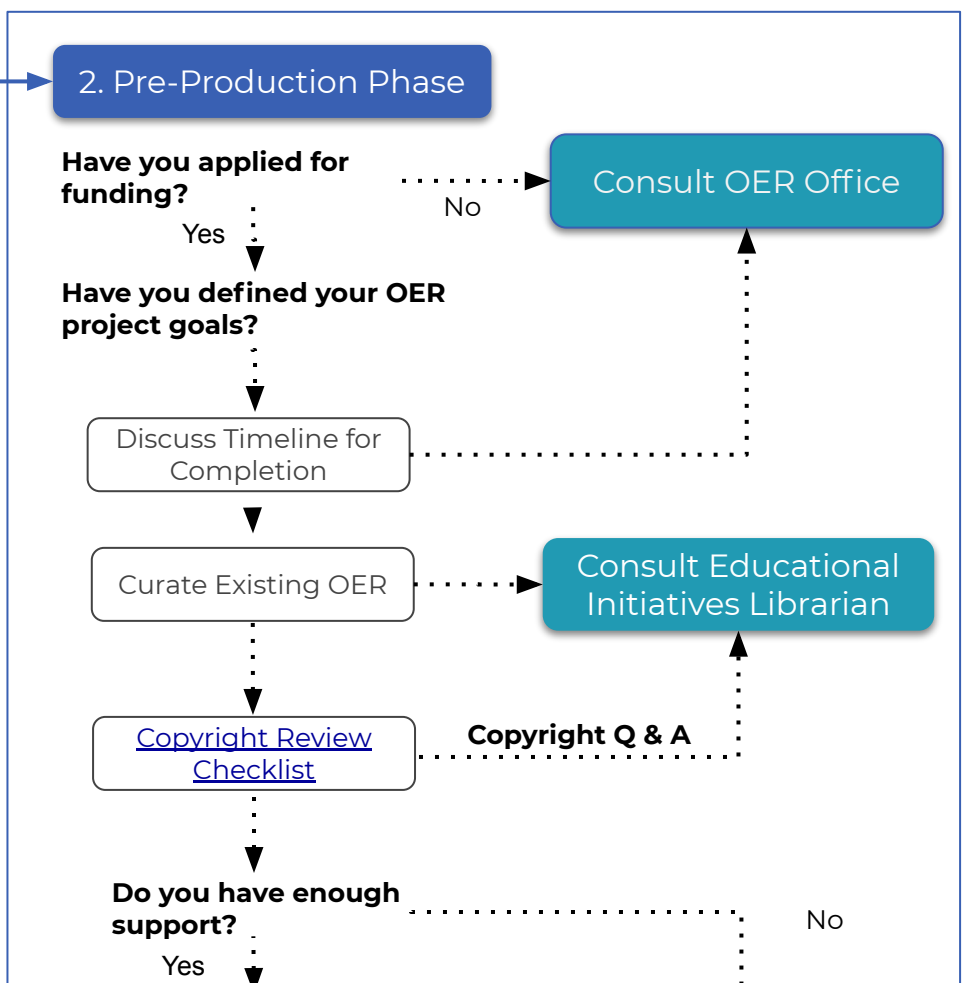
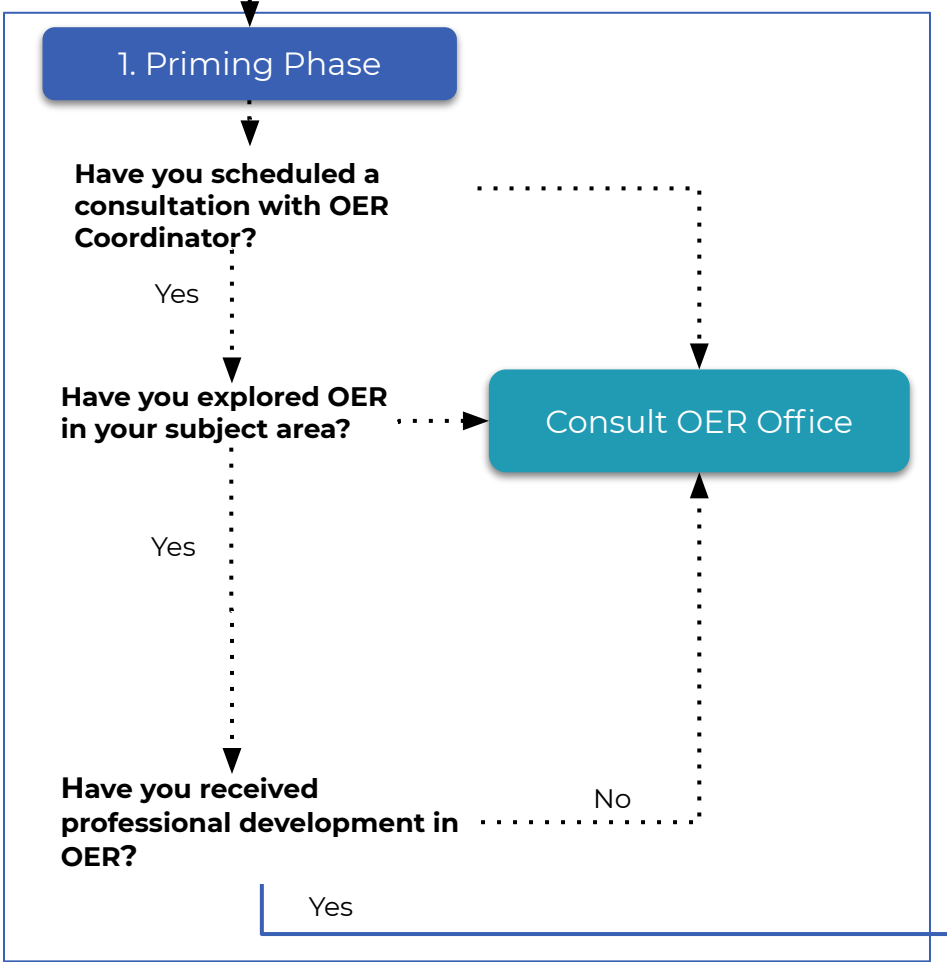
Production of Open Educational Resources (OER)



Start here

For more information, please email

andrea.scott@slcc.edu



Link to this document: [Insert Link](#)

How to use this workflow diagram

This workflow can help you understand the major steps in the production of OER and manage your own progress towards creating OER. Key questions are asked at various points and direction to support from library. We ask faculty and departments authoring open content to engage in this process in order for their OER to be recognized.

Terms and their meaning

- OER = Open Educational Resources**
- IP = Intellectual Property**
- QA = Quality Assurance**
- IR = Institutional Repository**
- LMS = Learning Management System**

How to attribute this work

This work, created by Billy Meinke and University of Hawai'i at Mānoa, is licensed under a [CC BY 4.0 International license](#).- Revisions by Regina Gong at Lansing Community College and OPEN SLCC.

