

# Convocation

2017



**LISA BICKMORE  
POET  
LAUREATE**





# Convocation

2017



# THANK YOU!

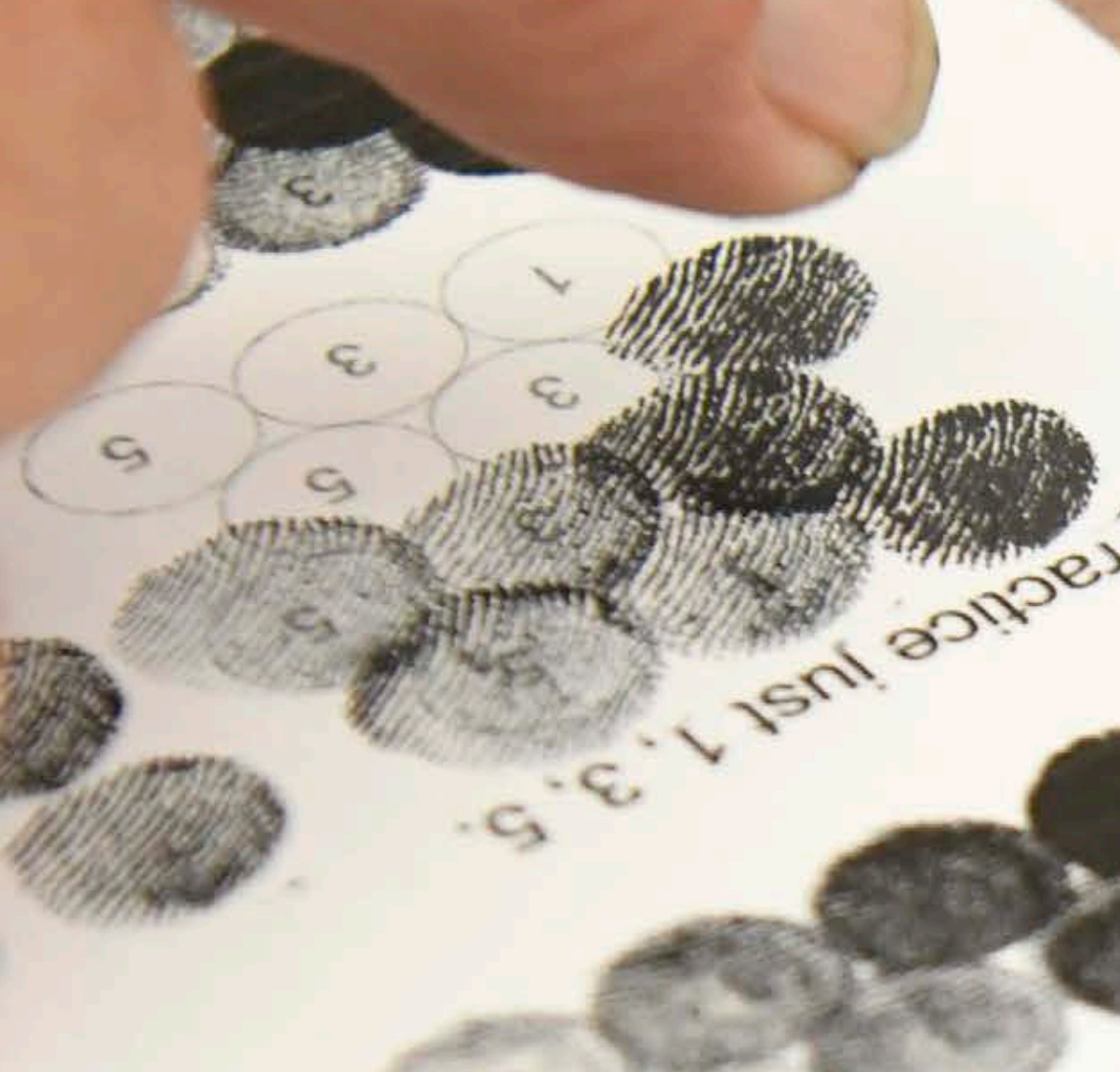
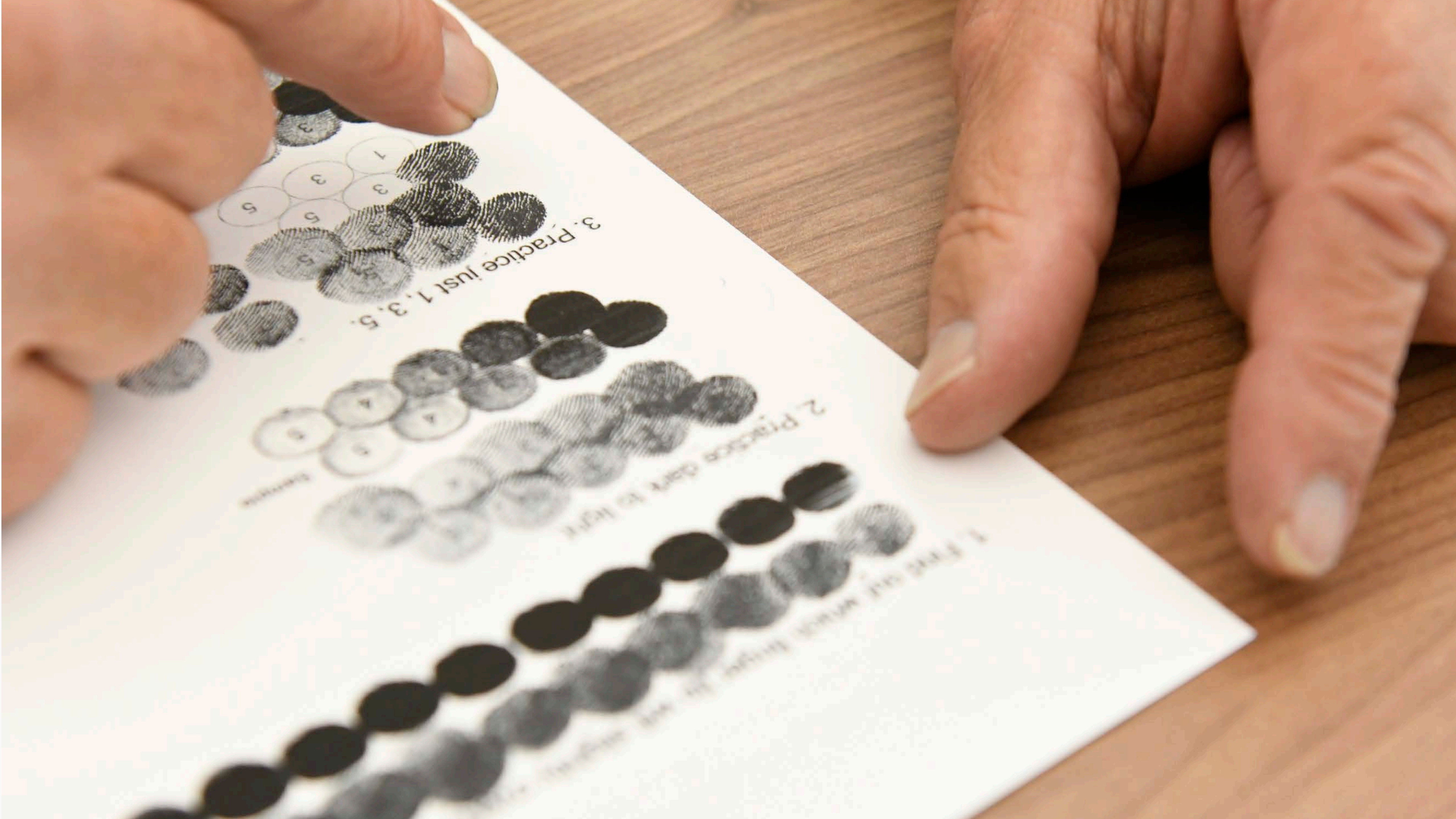


“We need to first be limited in order to become limitless.”









1. Practice just 1, 3, 5.



2. Practice dark to light.



3. Practice dark to light.







# Convocation

2017



# STRATEGIC PLAN

## YOUR COMMUNITY COLLEGE

SLCC STRATEGIC PLAN 2016-2023







## VISION

Salt Lake Community College will be a model for inclusive and transformative education, strengthening the communities we serve through the success of our students.



## MISSION

Salt Lake Community College is your community college. We engage and support students in educational pathways leading to successful transfer and meaningful employment.



## VALUES

Collaboration. Community. Inclusivity. Integrity. Innovation. Learning. Trust.



We stand clearly for

LOVE

ACCEPTANCE

INCLUSION


and AGAINST HATE



IT ALWAYS  
SEEMS  
IMPOSSIBLE  
UNTIL IT'S DONE.

NELSON MANDELA



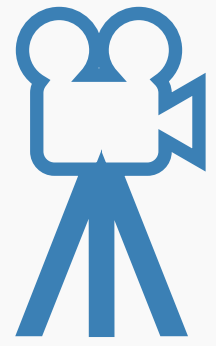


# GUIDED PATHWAYS

STUDENTS.  
YOUR TASSEL SHOULD BE ON THE  
RIGHT SIDE. YOU CAN NOW CHANGE

Diana's  
♡





Arts, Communication and  
Digital Media



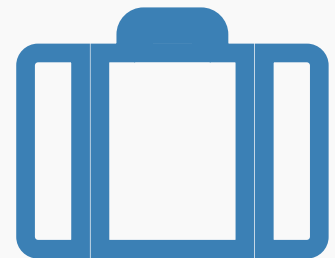
Humanities



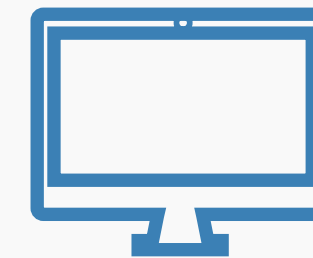
Social & Behavioral Sciences,  
Education and Human Services



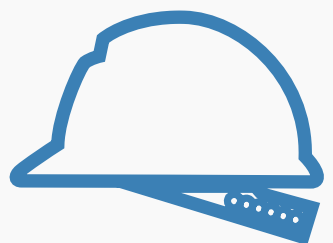
Science, Engineering  
and Math



Business



Computer Science  
and Information Technology



Manufacturing, Construction and  
Applied Technologies



Health Sciences



# DATA GOVERNANCE





START

# STRATEGIC ENROLLMENT MANAGEMENT

Admissions

FINISH

Placement  
Testing

Orientation  
*(including FYE advising)*

Registration

Residency  
Application

Transcript  
Evaluation

Financial Aid /  
Scholarships

Academic  
Advising

## Information Channels\*:

- MySLCC
- Letters
- Emails
- Website
- In-person

M  
L  
E  
W  
P

L

E

M

E

M

E

M

E

M

E

M

E

M

E

M

E

M



# TALENT ACQUISITION AND WORKPLACE CULTURE





# CIVIC ACTION







**EQUITY-  
MINDED  
PRACTITIONER  
DESIGNATION**



# Convocation

2017



# DUMKE CENTER FOR STEM LEARNING



Salt Lake  
Community  
College

School of Science,  
Mathematics & Engineering

Salt Lake  
Community  
College  
School of Science,  
Mathematics & Engineering  
**Mathematics**

**Biology**

COLLABORATIVE  
STUDY SPACE

[www.slcc.edu](http://www.slcc.edu)



# REVERSE TRANSFER PROGRAM

Salt Lake  
Community  
College

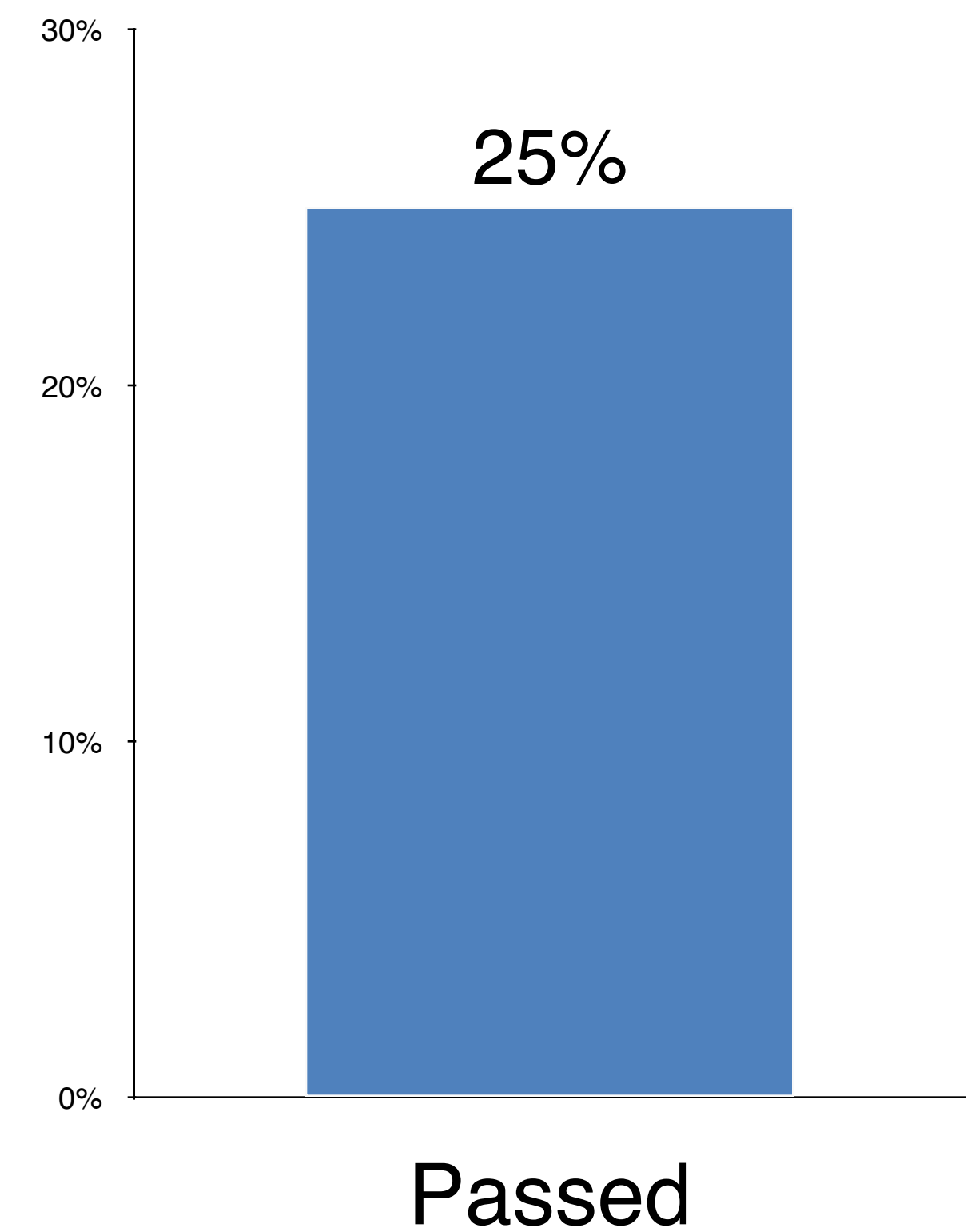
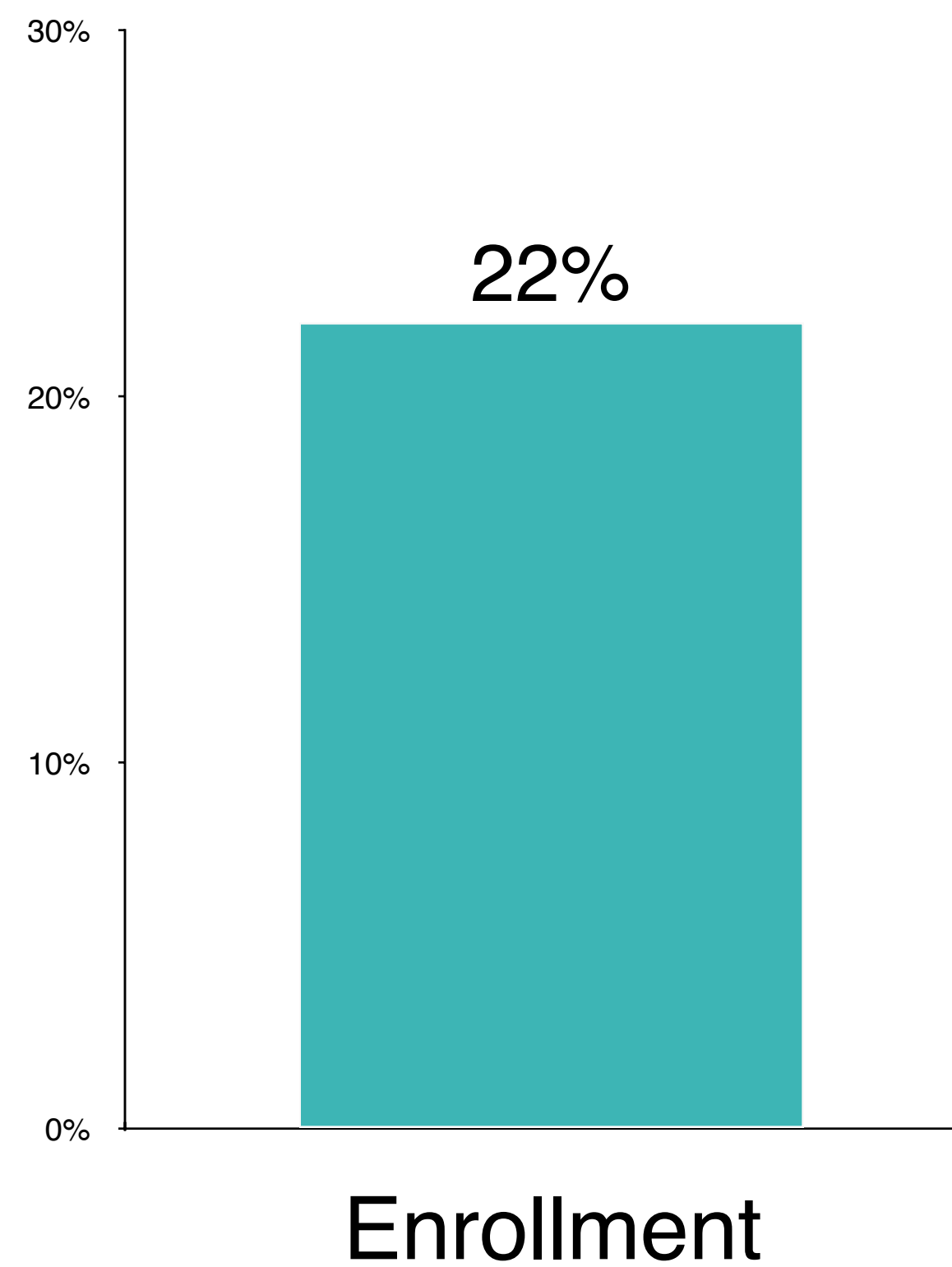


 THE  
UNIVERSITY  
OF UTAH



# NEW MATHWAY

## Percentage increase in quantitative literacy (QL) course enrollment and passing, Fall 2015 to Fall 2016





A young woman with blonde hair in a braid, wearing glasses and a maroon hoodie, is seen from the side, looking at two computer monitors. The monitor on the right displays a web application with a blue header and several input fields. The monitor on the left is mostly blank. The scene is set in a bright room with a large window in the background showing trees. A yellow graphic overlay is in the top right corner.

# **WESTMINSTER BUSINESS AND SCIENCE PATHWAY**



A man with grey hair, wearing a brown polo shirt, is leaning over a desk and pointing at a computer monitor. He is looking intently at the screen. In the foreground, the back of a student's head is visible; the student is wearing a camouflage-patterned baseball cap and a dark blue shirt. The student's hands are on a keyboard. The desk is cluttered with various items: a black keyboard, a mouse, a smartphone, and some papers. In the background, other computer monitors and classroom equipment are visible, suggesting a technical or computer lab environment. A semi-transparent blue rectangular box is overlaid on the right side of the image, containing white text.

# WORKFORCE & CAREER & TECHNICAL EDUCATION



# WESTPOINTE WORKFORCE TRAINING & EDUCATION CENTER








SLCC  
PROMISE  
Your dream. Our commitment.

SLCC  
PROMISE

Salt Lake  
Community  
College





# PACE PROGRAM





**AWARD  
SPRING**





**We've got heart.**



**NATIONAL  
SCIENCE  
FOUNDATION  
GRANT**





PUBLICATION  
CENTER

137

PUBLICATION  
CENTER

write  
collaborate  
design  
publish  
circulate

NATIONAL  
ENDOWMENT  
OF THE  
HUMANITIES  
GRANT







## Alumni Brothers Get Taste of Success

Culinary Arts alumni and brothers, Jung Kyu Kim and Jung Min Kim, are making their dream of owning a restaurant a reality. [READ MORE >](#)



## Call for Entries: 2017 President's Art Show

Submit your original art to the annual SLCC President's Art Show.

[LEARN MORE >](#)



## Faculty Spotlight: Ted Moore

His advice? "Set higher standards for yourself and keep working until you reach them."

[READ MORE >](#)



# BRUIN SOCCER





# UTAH AEROSPACE PATHWAY



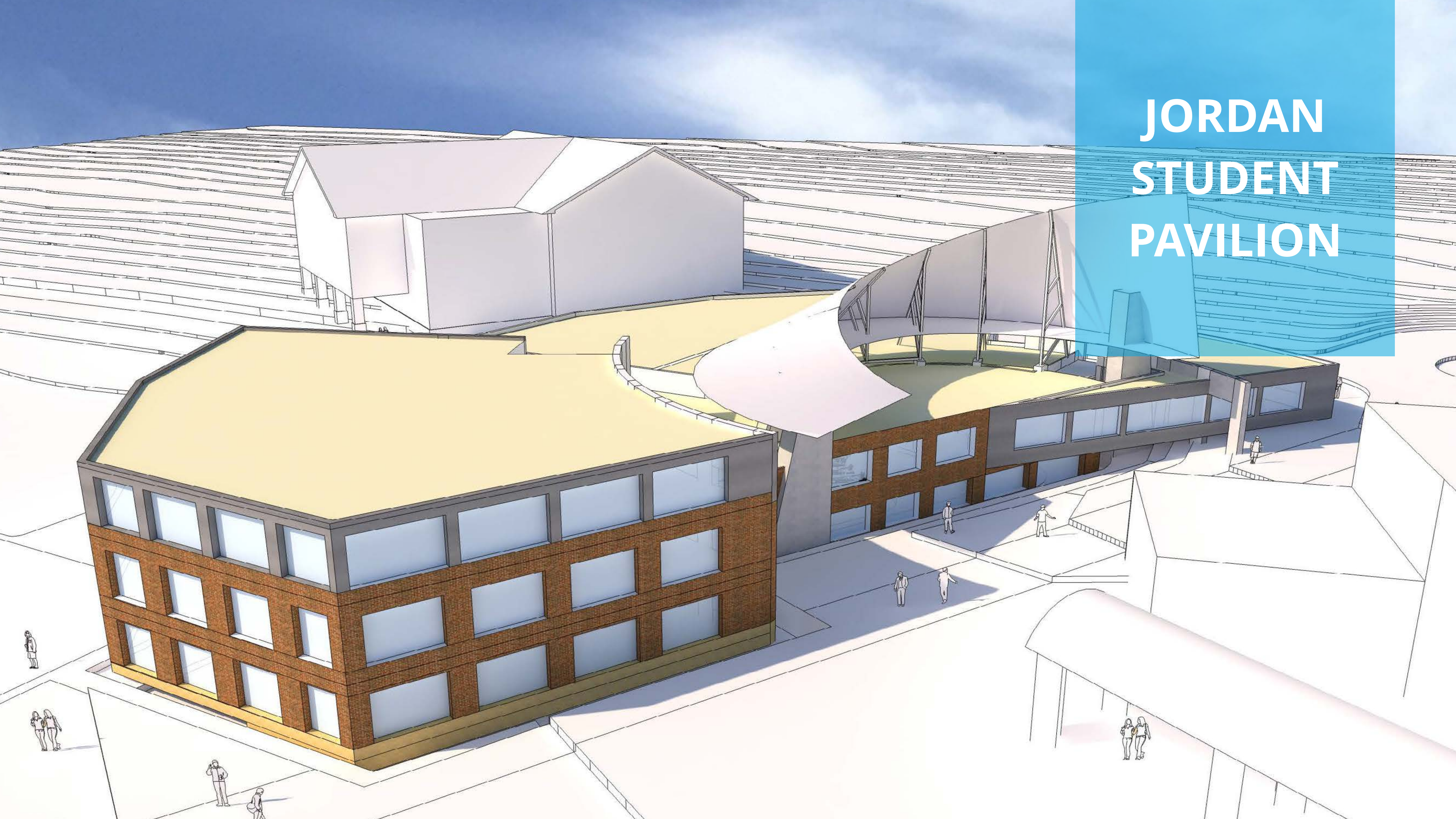


An aerial photograph showing a vast landscape. In the foreground, there are large, rectangular green fields, some of which appear to be under construction or recently cleared. To the right, there's a large building with a red roof. The middle ground shows a mix of green fields and some residential or commercial buildings. In the background, a range of mountains is visible under a cloudy sky. A yellow rectangular overlay is positioned in the top right corner, containing the text 'HERRIMAN CAMPUS' in white, bold, sans-serif capital letters.

# HERRIMAN CAMPUS



# JORDAN STUDENT PAVILION





IT ALWAYS  
SEEMS  
IMPOSSIBLE  
UNTIL IT'S DONE.

NELSON MANDELA







# Convocation

2017